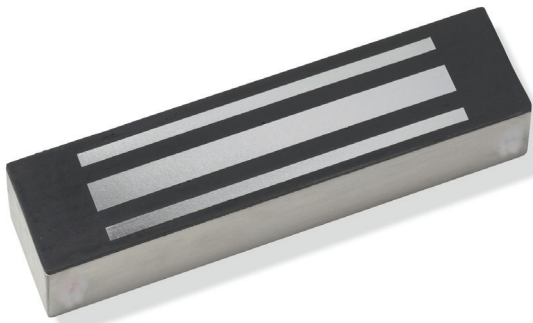


HORIZONTAL HOUSINGS - INTERNAL

AT500

500kg mortice magnet



- **Monitored**
- **Up to 500kg holding force**
- **No moving parts**
- **Fits AT500-H series housings**

- 12/24Vdc
- 500mA@ 12Vdc
- 228 x 39 x 27mm

Reference	Description
AT500	Mortice magnet
AT500M	Mortice magnet, monitored

Architectural housings

AT-H HOUSINGS

- **Surface mount**
- **SAA finish (Satin Anodised Aluminium)**
- **Easy installation**
- **Forms part of door frame**
- **Visually aesthetic**
- **RAL colour finishes available**
- **Single & double door versions**
- **Horizontal or vertical fix models**
- **End caps and fixing kit**

- **Dimensions (LxWxD):**
 - AT300-1 series = 998 x 45 x 45mm
 - AT300-2 series = 1998 x 45 x 45mm
 - AT500-1 series = 995 x 70 x 50mm
 - AH500-2 series = 1995 x 70 x 50mm



Note:
Each housing is supplied with end-caps, which are fitted once the housings are cut to fit the door(s).
We do offer a cutting service, where we will cut the housings to measurements supplied by you - these measurements to be supplied to us in a written form.
Magnets are not included in the housing prices.

Reference	Description
AT300-1H	1M housing, 1 cut out for V3ER
AT300-2-1H	2M housing, 1 cut out for V3ER
AT300-2-2H	2M housing, 2 cut outs for V3ER
AT300-2-2HV	2M housing, 2 end cut outs for V3ER
AT300-1L	1M L bracket for AT300-1H
AT300-2L	2M L bracket for AT300-2H
AT500-1H	1M housing, 1 cut out for AT500
AT500-2-1H	2M housing, 1 cut out for AT500
AT500-2-2H	2M housing, 2 cut outs for AT500
AT500-2-2HV	2M housing, 2 end cut outs for AT500
AT500-1L	1M L bracket for AT500-1H
AT500-2L	2M L bracket for AT500-2H